



Technical Specifications of Closed Lifeboat

Type/Code: LB01

Dimensions: 5,68X2,45X2,96

Capacity: 23

Weight: 2980 Kg

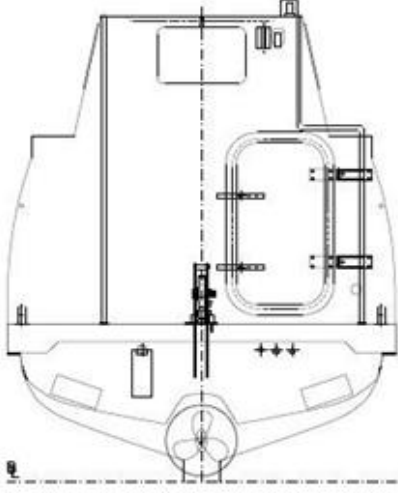
Engine Power: 4 stroke inboard engine

Fuel Tank Capacity: 200 Lt

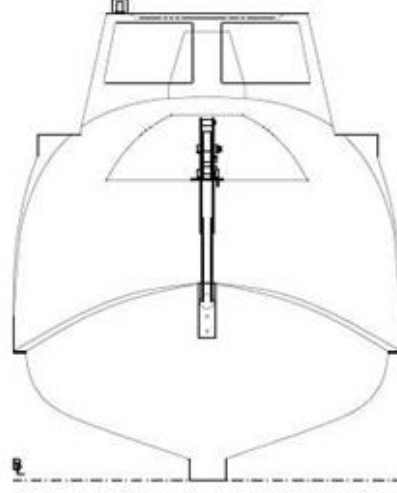
Class: RMRS

We produce the lifeboats for 19 people, but we can produce it according to the request of the client.

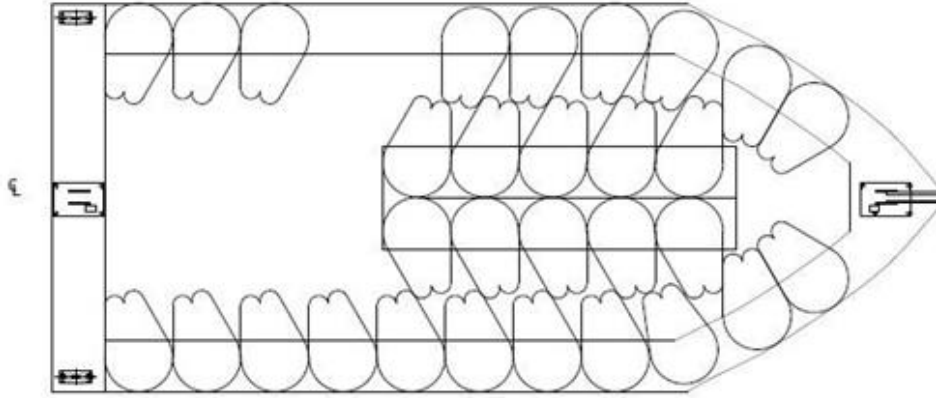
GENERAL LAYOUT



κ
KIÇTAN GÖRÜNÜŞ

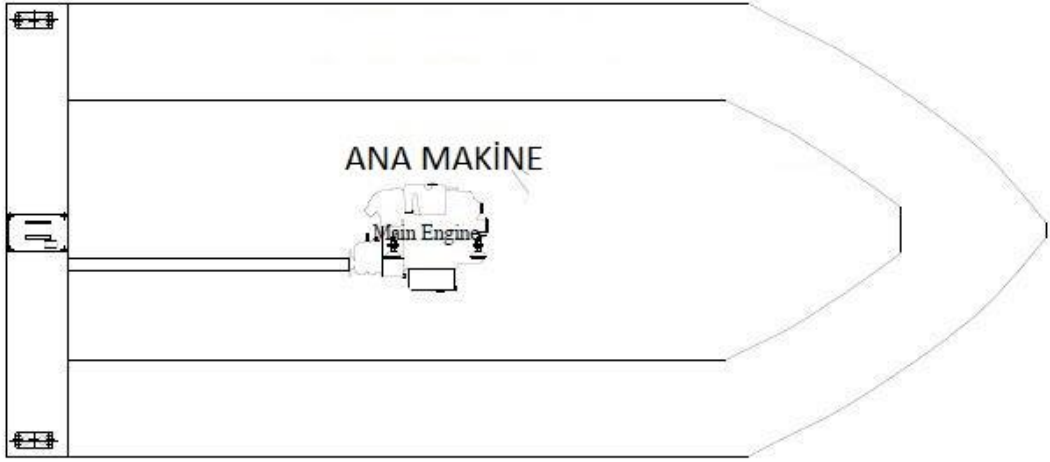


κ
ÖNDEN GÖRÜNÜŞ

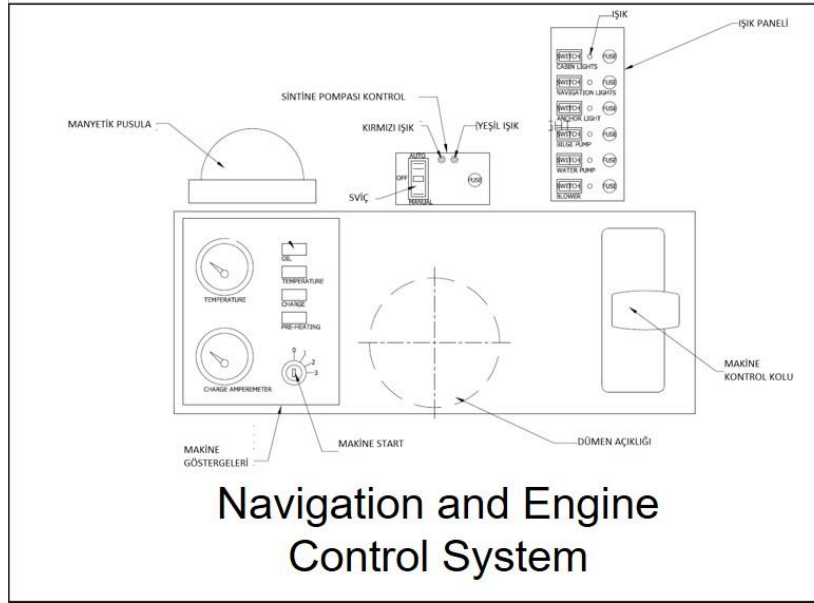
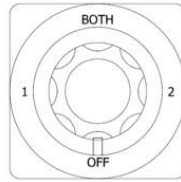


ANA GÜVERTE

MAIN ENGINE



Main Power Switch



FIRE EXTINGUISHING SYSTEM

The fire extinguishing system is designed to wash the entire boat.

