

## Technical Specifications of Free Fall Lifeboat

**Type/Code:** Totally Enclosed Freefall Lifeboat (CARGO Type) / FF14C

**Dimensions:** 5,68X2,46X2,96

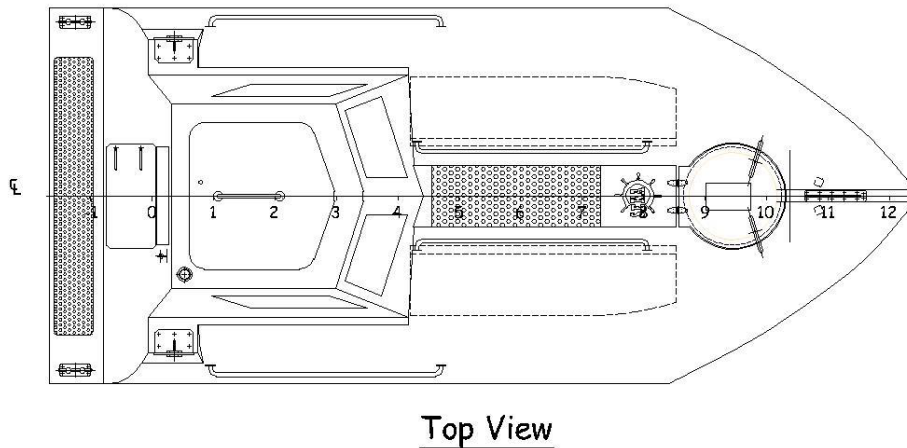
**Capacity:** 23 (according to your request)

**Weight:** 2600 Kg

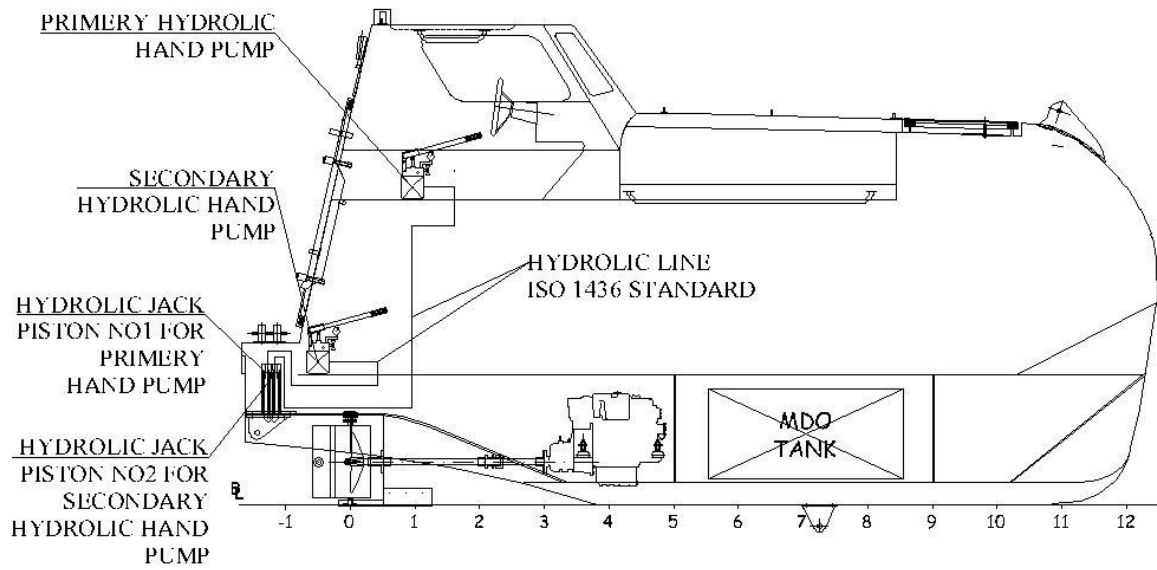
**Engine Power:** 29 HP, inboard diesel (four stroke, water cooled)

**Fuel Tank Capacity:** 200 Lt

**Class:** RMRS



## ENGINE



Stainless/galvanized steel nozzle steering is remote controlled by the lifeboat master through the cable system.

